



EMPOWERED PERFORMANCE

PRODUCT PORTFOLIO

CATALOGUE

www.omal.com



PRODUCTS



EMPOWERED PERFORMANCE

PRODUCT PORTFOLIO








CATALOGUE

MAGNUM



WAFER BALL VALVES

SPECIFICATIONS








 Size:	<ul style="list-style-type: none"> • DN 15 ÷ DN 100 [mm] • 1/2" ÷ 4" [inch]
 Body material:	<ul style="list-style-type: none"> • A105 Carbon steel • 316 Stainless steel
 Available seats:	<ul style="list-style-type: none"> • PTFE Modified • PTFE Glass filled • PTFE Carbon filled • PEEK
 End connections:	<ul style="list-style-type: none"> • Flanged RF
 Pressure class:	<ul style="list-style-type: none"> • ANSI 150-300; PN 16-40
 Options:	<ul style="list-style-type: none"> • Mono-directional ball • Locking device • Stem Extension • Bottom tank • Oxygen use (on request*) • Hydrogen use (on request*)
 Certifications:	<ul style="list-style-type: none"> • Ex CE/UKCA • Pressure Equipment CE/UKCA • SIL (up to SIL3) • TA Luft & Fugitive Emission • Fire Safe

MAGNUM



SPLIT WAFER BALL VALVES

SPECIFICATIONS








 Size:	<ul style="list-style-type: none"> • DN 15 ÷ DN 200 [mm] • 1/2" ÷ 8" [inch]
 Body material:	<ul style="list-style-type: none"> • A105 Carbon steel • 316 Stainless steel
 Available seats:	<ul style="list-style-type: none"> • PTFE Modified • PTFE Glass filled • PTFE Carbon filled • Devlon • PEEK
 End connections:	<ul style="list-style-type: none"> • Flanged RF
 Pressure class:	<ul style="list-style-type: none"> • ANSI 150-300; PN 16-40 • ANSI 600; PN 63-100 (DN≤100)
 Options:	<ul style="list-style-type: none"> • 3-Ways (DN≤100) • Mono-directional ball • Locking device • Stem Extension • Bottom tank • Oxygen use (on request*) • Hydrogen use (on request*)
 Certifications:	<ul style="list-style-type: none"> • Ex CE/UKCA • Pressure Equipment CE/UKCA • SIL (up to SIL3) • TA Luft & Fugitive Emission • Fire Safe

THOR

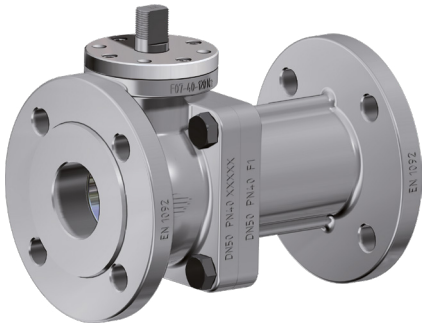


SPLIT BODY FLANGED BALL VALVES

SPECIFICATIONS

 Size:	<ul style="list-style-type: none"> • DN 15 ÷ DN 200 [mm] • 1/2" ÷ 8" [inch]
 Body material:	<ul style="list-style-type: none"> • A105 Carbon steel • 316 Stainless steel • CF8M s.s. (CL 150-300)
 Available seats:	<ul style="list-style-type: none"> • PTFE Modified • PTFE Glass filled • PTFE Carbon filled • Devlon • PEEK
 End connections:	<ul style="list-style-type: none"> • Flanged RF (RTJ on request)
 Pressure class:	<ul style="list-style-type: none"> • ANSI 150-300 • ANSI 600; PN 63-100 (DN≤100) • ANSI 900-1500 (DN≤50)
 Options:	<ul style="list-style-type: none"> • 3-Ways (DN≤100) • Reduced bore • Mono-directional ball • Locking device • Stem Extension • Oxygen use (on request*) • Hydrogen use (on request*)
 Certifications:	<ul style="list-style-type: none"> • Ex CE/UKCA • Pressure Equipment CE/UKCA • SIL (up to SIL3) • TA Luft & Fugitive Emission • Fire Safe

PROCHEMIE 60



SPLIT BODY BALL VALVES FOR CHEMICAL INDUSTRY

SPECIFICATIONS

Size:

- DN 15 ÷ DN 150 [mm]
- 1/2" ÷ 6" [inch]

Body material:

- 1.4408 Stainless steel

Available seats:

- PTFE Modified
- PTFE Glass filled
- PTFE Carbon filled
- Devlon
- PEEK

End connections:

- Flanged RF

Pressure class:

- PN 16-40

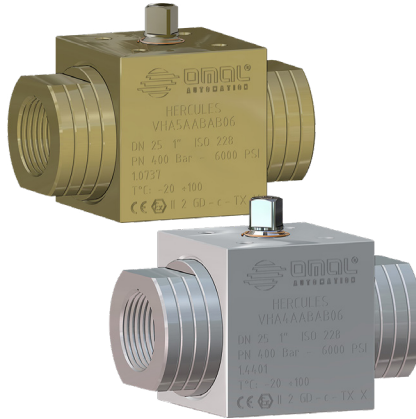
Options:

- Mono-directional ball
- Locking device
- Stem Extension
- Oxygen use (on request*)

Certifications:

- Ex CE/UKCA
- Pressure Equipment CE/UKCA
- AD2000 HP0 / A4
- TA Luft 60000 cycles
- Fugitive Emission
- Fire Safe
- SIL (up to SIL3)

HERCULES



HIGH PRESSURE BALL VALVES

SPECIFICATIONS

Size:

- DN 6 ÷ DN 25 [mm]
- 1/8" ÷ 1" [inch]

Body material:

- Carbon steel
- 316 Stainless steel

Available seats:

- Devlon
- Pom

End connections:

- ISO 228-1
- NPT (ANSI B1.20.1)

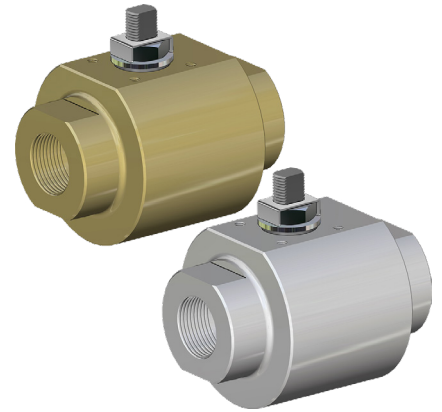
Max pressure:

- PN 500 (varied by size)
- 7250 PSI (varied by size)

Certifications:

- Ex CE/UKCA
- SIL (up to SIL3)

KRATOS



HIGH PRESSURE BALL VALVES

SPECIFICATIONS

Size:

- DN 8 ÷ DN 50 [mm]
- 1/4" ÷ 2" [inch]

Body material:

- A350-LF2 Carbon steel
- 316 Stainless steel

Available seats:

- PTFE Carbon filled
- PTFE Glass filled
- Devlon
- PEEK

End connections:

- ISO 228-1
- NPT (ANSI B1.20.1)

Max pressure:

- PN 414 (varies by size)
- 6000 PSI (varies by size)

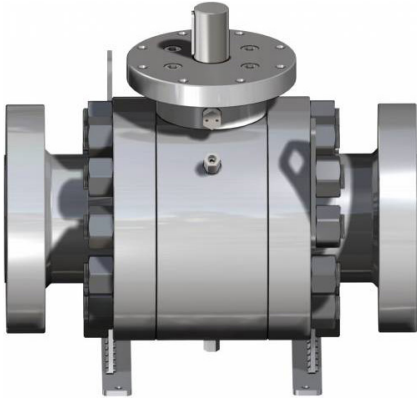
Options:

- Oxygen use (on request*)
- Hydrogen use (on request*)
- Mono-directional ball
- BW / SW connection
- Stem Extension

Certifications:

- Ex CE/UKCA
- Pressure Equipment CE/UKCA
- Fugitive Emission
- SIL (up to SIL3)
- Fire Safe

SUPREME TRUNNION

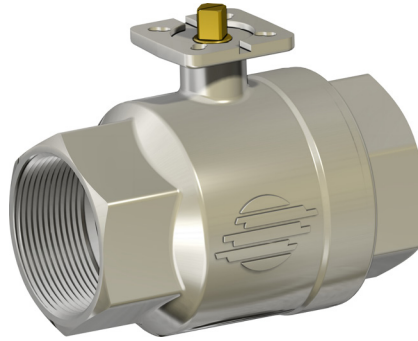


TRUNNION BALL VALVES

SPECIFICATIONS

- Size:**
 - DN 50 ÷ DN 600 [mm]
 - 2" ÷ 24" [inch]
- Body material:**
 - Carbon steel
 - Stainless steel
- Available seats:**
 - RPTFE
 - Devlon
 - PEEK
- End connections:**
 - Flanged RF / RTJ
- Pressure class:**
 - ANSI 150-2500 (varied by size)
- Options:**
 - BW / SW connection
- Certifications:**
 - Ex CE/UKCA
 - Pressure Equipment CE/UKCA
 - Fire Safe
 - SIL (up to SIL3)
 - Fugitive Emission
 - API6D on request

ITEM 101

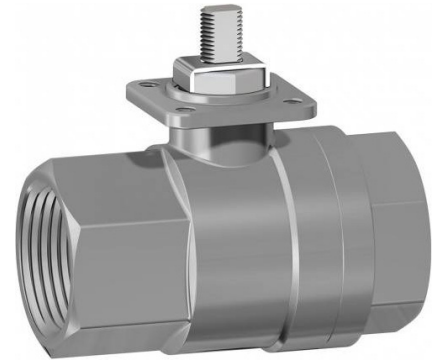


2 PIECES BRASS BALL VALVES

SPECIFICATIONS

- Size:**
 - DN 10 ÷ DN 80 [mm]
 - 3/8" ÷ 3" [inch]
- Body material:**
 - Brass
- Available seats:**
 - PTFE Modified
- End connections:**
 - ISO 7/1
 - NPT (ANSI B1.20.1)
- Max pressure:**
 - PN 63 (varies by size)
 - 913 PSI (varies by size)
- Certifications:**
 - Ex CE/UKCA
 - Pressure Equipment CE/UKCA

ITEM 400



2 PIECES STAINLESS STEEL BALL VALVES

SPECIFICATIONS








- Size:**
 - DN 10 ÷ DN 100 [mm]
 - 3/8" ÷ 4" [inch]
- Body material:**
 - CF8M / 1.4408 Stainless steel
- Available seats:**
 - PTFE Modified
 - PTFE Glass filled
 - PTFE Carbon filled
- End connections:**
 - ISO 7/1
 - NPT (ANSI B1.20.1)
- Max pressure:**
 - PN 100 (varies by size)
 - 1450 PSI (varies by size)
- Certifications:**
 - Ex CE/UKCA
 - Pressure Equipment CE/UKCA

ITEM 424



3 PIECES STAINLESS STEEL BALL VALVES

SPECIFICATIONS



 Size:	<ul style="list-style-type: none"> DN 8 ÷ DN 100 [mm] 1/4" ÷ 4" [inch]
 Body material:	<ul style="list-style-type: none"> CF8M / 1.4408 Stainless steel
 Available seats:	<ul style="list-style-type: none"> PTFE Modified PTFE Glass filled PTFE Carbon filled
 End connections:	<ul style="list-style-type: none"> ISO 7/1 NPT (ANSI B1.20.1)
 Max pressure:	<ul style="list-style-type: none"> PN 63 913 PSI
 Options:	<ul style="list-style-type: none"> BW / SW connection Oxygen use (on request*)
 Certifications:	<ul style="list-style-type: none"> Ex CE/UKCA Pressure Equipment CE/UKCA

BUTTERFLY VALVES

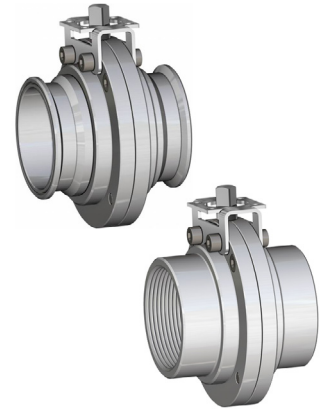


BUTTERFLY VALVES DUCTILE IRON

SPECIFICATIONS








 Size:	<ul style="list-style-type: none"> DN 40 ÷ DN 600 [mm] 1 1/2" ÷ 24" [inch]
 Body material:	<ul style="list-style-type: none"> Ductile iron
 Disc material:	<ul style="list-style-type: none"> Ductile iron CF8M Bronze aluminium
 Available seats:	<ul style="list-style-type: none"> EPDM NBR FKM PTFE
 End connections:	<ul style="list-style-type: none"> Wafer Lug PN 10/16 (DN≤150) Lug PN 10 - PN 16 (DN≥200) ANSI 150
 Max pressure:	<ul style="list-style-type: none"> 16 bar
 Options:	<ul style="list-style-type: none"> Pneumatic actuation Electric actuation
 Certifications:	<ul style="list-style-type: none"> Ex CE/UKCA Pressure Equipment CE/UKCA ADR (EN 14432) WRAS

BUTTERFLY VALVES



BUTTERFLY VALVES STAINLESS STEEL

SPECIFICATIONS









 Size:	<ul style="list-style-type: none"> DN 25 ÷ DN 100 [mm] 1" ÷ 4" [inch]
 Body material:	<ul style="list-style-type: none"> Stainless steel
 Disc material:	<ul style="list-style-type: none"> CF8M/CF3M
 Available seats:	<ul style="list-style-type: none"> SILICONE EPDM FKM
 End connections:	<ul style="list-style-type: none"> Clamp Threaded Butt welded
 Pressure class:	<ul style="list-style-type: none"> PN 6
 Options:	<ul style="list-style-type: none"> Pneumatic actuation Electric actuation
 Certifications:	<ul style="list-style-type: none"> Ex CE/UKCA Pressure Equipment CE/UKCA

VIP



**PNEUMATIC COAXIAL VALVES
PN 10 / 145 PSI**

SPECIFICATIONS









 Size:	<ul style="list-style-type: none"> • DN 10 ÷ DN 50 [mm] • 3/8" ÷ 2" [inch]
 Body material:	<ul style="list-style-type: none"> • Brass
 Available seats:	<ul style="list-style-type: none"> • FKM • NBR • EPDM
 End connections:	<ul style="list-style-type: none"> • NPT (ANSI B1.20.1) • ISO 7/1
 Max pressure:	<ul style="list-style-type: none"> • 10 bar • 145 PSI
 Variations:	<ul style="list-style-type: none"> • Double acting • Spring return N.C. - N.O.
 Options:	<ul style="list-style-type: none"> • Limit switch • Oxygen use (on request*)
 Certifications:	<ul style="list-style-type: none"> • Ex CE/UKCA • Pressure Equipment CE/UKCA

VIP EVO



**PNEUMATIC COAXIAL VALVES
PN 40 / 580 PSI**

SPECIFICATIONS









 Size:	<ul style="list-style-type: none"> • DN 10 ÷ DN 50 [mm] • 3/8" ÷ 2" [inch]
 Body material:	<ul style="list-style-type: none"> • Aluminium - brass
 Available seats:	<ul style="list-style-type: none"> • PTFE Glass filled • Sealing: FKM, NBR, EPDM
 End connections:	<ul style="list-style-type: none"> • NPT (ANSI B1.20.1) • ISO 7/1
 Max pressure:	<ul style="list-style-type: none"> • PN 40 • 580 PSI
 Variations:	<ul style="list-style-type: none"> • Double acting • Spring return N.C. - N.O.
 Options:	<ul style="list-style-type: none"> • Namur plate • Limit switch • Oxygen use (on request*)
 Certifications:	<ul style="list-style-type: none"> • Ex CE/UKCA • Pressure Equipment CE/UKCA • CRN • SIL (up to SIL3)

ARES



**PNEUMATIC ANGLE SEAT
VALVES**

SPECIFICATIONS

 Size:	<ul style="list-style-type: none"> • DN 15 ÷ DN 50 [mm] • 3/8" ÷ 2" [inch]
 Body material:	<ul style="list-style-type: none"> • Stainless steel
 Available seats:	<ul style="list-style-type: none"> • PTFE Modified • FKM • NBR • EPDM
 End connections:	<ul style="list-style-type: none"> • NPT (ANSI B1.20.1) • ISO 7/1 • ISO 228-1 • Flanged (PN 16 - ANSI 150) • Weld ends • Clamp
 Max pressure:	<ul style="list-style-type: none"> • PN 16 - PN 25 • 230 - 360 PSI
 Variations:	<ul style="list-style-type: none"> • Double acting • Spring return N.C. - N.O. • Manual operated
 Options:	<ul style="list-style-type: none"> • Oxygen use (on request*) • Namur plate • Limit switch box
 Certifications:	<ul style="list-style-type: none"> • Ex CE/UKCA • Pressure Equipment CE/UKCA

ZEUS



PNEUMATIC ANGLE SEAT VALVES

SPECIFICATIONS

**Size:**

- DN 15 ÷ DN 50 [mm]
- 3/8" ÷ 2" [inch]

**Body material:**

- Bronze

**Available seats:**

- PTFE Modified
- FKM
- NBR
- EPDM

**End connections:**

- NPT (ANSI B1.20.1)
- ISO 228-1

**Max pressure:**

- PN 16
- 230 PSI

**Variations:**

- Double acting
- Spring return N.C. - N.O.
- Manual operated

**Options:**

- Oxygen use (on request*)
- Namur plate
- Limit switch box

**Certifications:**

- Ex CE/UKCA
- Pressure Equipment CE/UKCA

AGC®



ALUMINIUM PNEUMATIC ACTUATORS

SPECIFICATIONS

✓ **Type:**

- Scotch yoke

↻ **Nominal torque:**

- DA (Double acting):
8 Nm ÷ 8000 Nm
70 in-lbs ÷ 70806 in-lbs
- SR (Spring return):
15 Nm ÷ 4000 Nm
133 in-lbs ÷ 35403 in-lbs

↗ **Size:**

- DA 8 ÷ DA 8000
- SR 15 ÷ SR 4000

🔧 **Body material:**

- Aluminium

⚙️ **Variations:**

- Double acting
- Spring return N.C. - N.O.

⚙️ **Options:**

- Low temp. version:
-50°C / -58°F
- High temp. version:
+150°C / +302°F
- Adjustable rotation
- Surface treatments

🏆 **Certifications:**

- Ex CE/UKCA
- SIL (up to SIL3)

AGC®

HANDWHEEL



PNEUMATIC ACTUATORS WITH INTEGRATED HANDWHEEL

SPECIFICATIONS

✓ **Type:**

- Scotch yoke

↻ **Nominal torque:**

- DA (Double acting):
60 Nm ÷ 3840 Nm
531 in-lbs ÷ 33986 in-lbs
- SR (Spring return):
30 Nm ÷ 1920 Nm
265 in-lbs ÷ 16993 in-lbs

↗ **Size:**

- DANV 60 ÷ DANV 3840
- SRNV 30 ÷ SRNV 1920

🔧 **Body material:**

- Aluminium

⚙️ **Variations:**

- Double acting
- Spring return N.C. - N.O.

⚙️ **Options:**

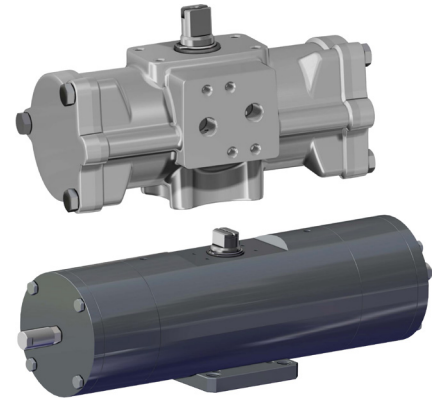
- Low temp. version:
-50°C / -58°F
- High temp. version:
+150°C / +302°F
- Surface treatments

🏆 **Certifications:**

- Ex CE/UKCA
- SIL (up to SIL3)

AGC®

CF8M-316-A105



INOX AND CARBON STEEL PNEUMATIC ACTUATORS

SPECIFICATIONS

✓ **Type:**

- Scotch yoke

↻ **Nominal torque:**

- DA (Double acting):
15 Nm ÷ 1920 Nm
133 in-lbs ÷ 16993 in-lbs
- SR (Spring return):
15 Nm ÷ 960 Nm
133 in-lbs ÷ 8496 in-lbs

↗ **Size:**

- DA 15 ÷ DA 1920
- SR 15 ÷ SR 960

🔧 **Body material:**

- Stainless steel
- Carbon steel

⚙️ **Variations:**

- Double acting
- Spring return N.C. - N.O.

⚙️ **Options:**

- Low temp. version:
-50°C / -58°F
- High temp. version:
+150°C / +302°F
- Surface treatments

🏆 **Certifications:**

- Ex CE/UKCA
- SIL (up to SIL3)

AGC® TWO STAGE

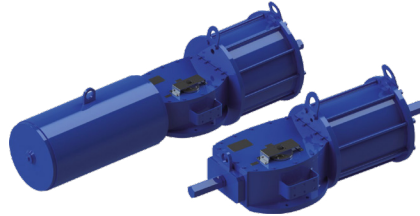


TWO STAGE PNEUMATIC ACTUATORS

SPECIFICATIONS

- ✓ **Type:**
 - Scotch yoke
- ↻ **Nominal torque:**
 - DDN:
 - 30 Nm ÷ 480 Nm
 - 265 in-lbs ÷ 4250 in-lbs
- ↗ **Size:**
 - DDN 30 ÷ DDN 480
- 🏗️ **Body material:**
 - Aluminium
- 🔧 **Variations:**
 - Double acting two stage
- 🏆 **Certifications:**
 - Ex CE/UKCA

HEAVY DUTY



HEAVY DUTY PNEUMATIC ACTUATORS

SPECIFICATIONS

- ✓ **Type:**
 - Scotch yoke
- ↻ **Nominal torque:**
 - 2000 Nm ÷ 32000 Nm
 - 17700 in-lbs ÷ 283224 in-lbs
- ↗ **Size:**
 - 085 - 100 - 130
- 🏗️ **Body material:**
 - Carbon steel
- 🔧 **Variations:**
 - DA: Double acting
 - SR: Spring return N.C. - N.O.
- ⚙️ **Options:**
 - Manual hydraulic override
 - Special painting
- 🏆 **Certifications:**
 - Ex CE/UKCA
 - SIL (up to SIL3)

RACKON®



RACK & PINION PNEUMATIC ACTUATORS

SPECIFICATIONS

- ✓ **Type:**
 - Rack & Pinion
- ↻ **Nominal torque:**
 - DA (Double acting):
 - 10 Nm ÷ 474 Nm
 - 88 in-lbs ÷ 4195 in-lbs
 - SR (Spring return):
 - 15 Nm ÷ 347 Nm
 - 133 in-lbs ÷ 3071 in-lbs
- ↗ **Size:**
 - DA: RK 10 ÷ RK 480
 - SR: RK 20 ÷ RK 480
- 🏗️ **Body material:**
 - Aluminium
- 🔧 **Variations:**
 - Double acting
 - Spring return N.C. - N.O.
- ⚙️ **Options:**
 - GAS or NPT namur plate
 - Low temp. version: -50°C / -58°F
 - High temp. version: +150°C / +302°F
 - Adjustable rotation
 - Accessories
- 🏆 **Certifications:**
 - Ex CE/UKCA
 - SIL (up to SIL3)

AE - AM - EA



ELECTRIC ACTUATORS

SPECIFICATIONS

- ✓ **Type:**
 - Electric actuator "AE" on-off rotary type
 - Electric actuator "AM" rotary modular type
 - Electric actuator "EA" on-off rotary type
- ↻ **Nominal torque:**
 - 10 Nm ÷ 3000 Nm
 - 88 in-lbs ÷ 26550 in-lbs
- ↗ **Size:**
 - AE 10 ÷ AE 2000
 - AM 20 ÷ AM 2000
 - EA0035 ÷ EA0240
- 🔗 **Body material:**
 - Aluminium
- ⚙️ **Variations:**
 - ON-OFF
 - Modulating
 - IP 68
- ⚙️ **Options:**
 - 24 Vac/dc - 24 Vdc
 - 115 Vac
 - 230 Vac
 - 400 Vac 3-
 - Torque limiter
 - Space heater
 - R/I converter
 - Speed controller
 - Fail safe position (F.C. - F.O.)
- 🏆 **Certifications:**
 - Ex CE/UKCA

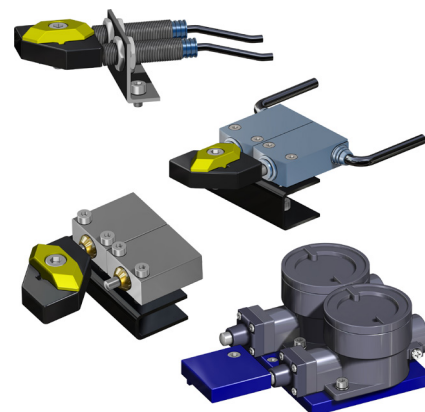
SOLENOIDS



SPECIFICATIONS

- ✓ **Type:**
 - Namur 3/2 - 5/2: mono and bistable
 - Electropilots 3/2: monostable
- 🔗 **Body material:**
 - Aluminium
- 🔗 **Pneumatic connections:**
 - 1/8" GAS-F
 - 1/4" GAS/NPT-F
 - 1/2" GAS/NPT-F
- ⚡ **Electrical connections:**
 - PG9
 - M20x1.5
 - 1/2" NPT-F
- 🌡️ **Supply pressure:**
 - 3 ÷ 10 bar (45 ÷ 150 PSI)
- ⚡ **Supply voltage:**
 - 24 ÷ 230 V ac/dc
- 🌡️ **Temperature range:**
 - -20°C ÷ +80°C / -4°F ÷ +176°F
- 🛡️ **IP Grade:**
 - IP 65 / IP 66
- ⚙️ **Options (on request):**
 - Pneumatic connections NPT
 - Body material in 316 S.S.
- 🏆 **Certifications:**
 - Ex CE/UKCA
 - SIL (up to SIL3)
 - More on request

LIMIT SWITCH



SPECIFICATIONS

- ✓ **Type:**
 - Electromechanical
 - Magnetic
 - Inductive
 - Pneumatic
- 🔗 **Body material:**
 - Aluminium
 - Plastic
- 🔗 **Connections:**
 - PG11
 - 1/2" NPT-F
 - With integrated cable
 - Pipe 4x2mm (pneumatic)
- 🌡️ **Temperature range:**
 - -25°C ÷ +70°C / -13°F ÷ +158°F
- 🛡️ **IP Grade:**
 - IP 65 ÷ 68
- 🔧 **Mounting kit:**
 - Included
- ⚙️ **Options (on request):**
 - With integrated LED
 - Electrical conn.: M20x1.5
- 🏆 **Certifications:**
 - Ex CE/UKCA

LIMIT SWITCH BOX



SPECIFICATIONS

✓ **Type:**

- Electromechanical
- Magnetic
- Inductive

📄 **STD:**

- VDI/VDE 3845 (EN15714-3)

🔧 **Body material:**

- Aluminium
- Stainless steel
- Plastic

⚡ **Electrical connections:**

- M20x1.5
- 1/2" NPT-F

🌡️ **Temperature range:**

- -40°C ÷ +80°C
- -40°F ÷ +176°F

🛡️ **IP Grade:**

- IP 65 ÷ 67

🔧 **Mounting kit:**

- Included

🏆 **Certifications:**

- Ex CE/UKCA
- IEC Ex 60079
- SIL (up to SIL3)
- More on request

POSITIONERS



SPECIFICATIONS

✓ **Type:**

- Pneumatic
- Electropneumatic
- Smart hart

🔧 **Body material:**

- Aluminium

⚡ **Pneumatic connections:**

- 1/4" NPT-F

⚡ **Electrical connections:**

- M20x1.5

🕒 **Supply pressure:**

- Up to 7 barg (105 psig)

⚡ **Electrical input:**

- 4-20 mA (electromechanical / smart hart)

🌡️ **Temperature range:**

- -40°C ÷ +80°C
- -40°F ÷ +176°F

🛡️ **IP Grade:**

- IP 65

🔧 **Mounting kit:**

- Included

⚙️ **Options (on request):**

- With feedback signal
- Body material in 316 S.S.
- IP 66 Grade
- T. range up to +100°C / +212°F

🏆 **Certifications:**

- Ex CE/UKCA

EMERGENCY MANUAL GEARBOX



SPECIFICATIONS

✓ **Type:**

- Declutchable Gear Operators

🔄 **Nominal torque:**

- 150 Nm ÷ 8300 Nm
- 1330 in-lbs ÷ 73460 in-lbs

🔧 **Body material:**

- Cast iron painted

NOTES:

A series of horizontal dotted lines for writing notes.



OMAL S.p.A. Società Benefit

Headquarter Via Ponte Nuovo, 11 - 25050 Rodengo Saiano (BS), Italy

Production Site Via Brognolo, 12 - 25050 Passirano (BS), Italy

Ph. +39 030 8900145 · Fax +39 030 8900423 · info@omal.it

OMAL USA Corp.

1835 Airport Exchange Blvd, Suite 100- 41018 Erlanger, (Kentucky), USA

Ph. +1 (859) 900-2108 · info@omal.com

OMAL Asia Pacific Ltd.

26/73, Moo 7, Racha Thewa Sub-district, Bang Phli District,
Samut Prakan Province, (Bangkok), Thailand

Ph. 02-117-1188 · info@omal.co.th

www.omal.com